

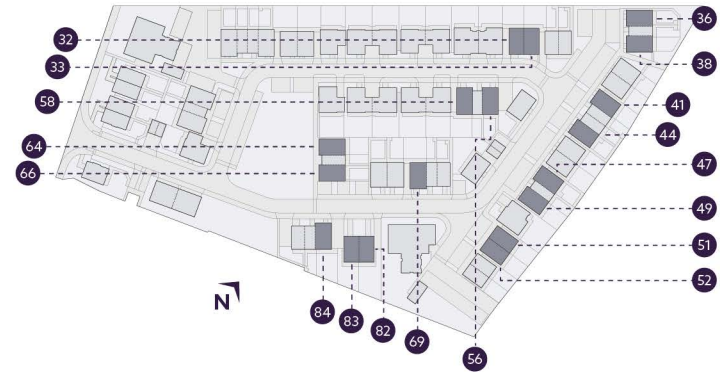
The Foxglove

3 Bedroom semi-detached & end of terrace

Plots 32, 51 & 82 are semi detached as shown. Plots 33, 52 & 83 are handed.

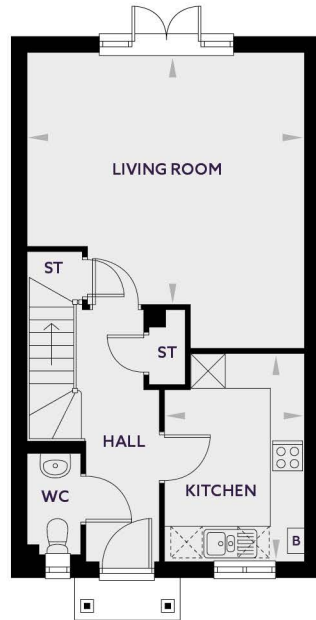
Plots 36, 41, 47, 56, 64, 69 & 84 are end of terrace as shown.

Plots 38, 44, 49, 58 & 66 are handed.



G

1



MM FT

Living / Dining (max)	5166 x 5351	16'11" x 17'7"
Kitchen	2560 x 3750	8'5" x 12'4"

B - BOILER ST - STORE CUPBOARD W - WARDROBE



MM FT

Bedroom 1	2791 x 4193	9'2" x 13'9"
Bedroom 2	2251 x 3593	7'5" x 11'9"
Bedroom 3	2800 x 3496	9'2" x 11'6"

All images and floor plans are for illustrative purposes only and may be changed. All dimensions are indicative and are not to be used for carpet sizes, appliance spaces or items of furniture.