

The Balsam

3 Bedroom detached & semi-detached

Plots 25, 26, 59 & 61 are detached as shown. Plots 27, 60 & 62 are handed.

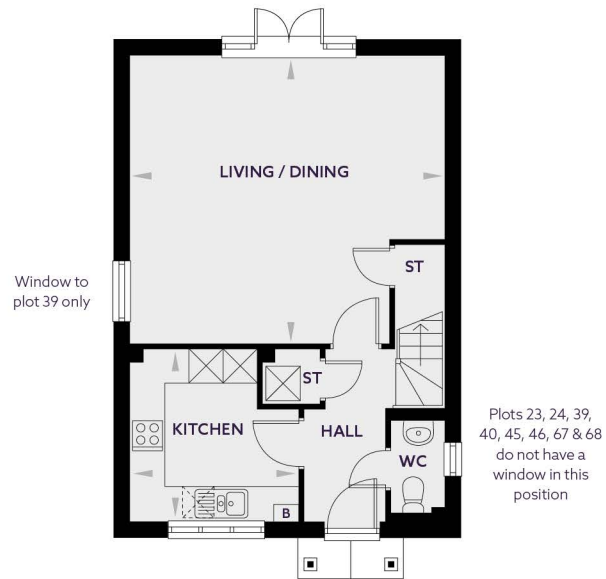
Plots 23, 39, 45 & 67 are semi detached as shown.

Plots 24, 40, 46 & 68 are handed.



G

1



Plots 23, 24, 39, 40, 45, 46, 67 & 68 do not have a window in this position

	MM	FT
Living / Dining (max)	5840 x 5348	19'0" x 17'7"
Kitchen	3114 x 3190	10'3" x 10'6"

B - BOILER ST - STORE CUPBOARD W - WARDROBE



	MM	FT
Bedroom 1	4795 x 3978	15'9" x 13'1"
Bedroom 2	3459 x 3396	11'4" x 11'2"
Bedroom 3	2267 x 3396	7'5" x 11'2"

All images and floor plans are for illustrative purposes only and may be changed. All dimensions are indicative and are not to be used for carpet sizes, appliance spaces or items of furniture.