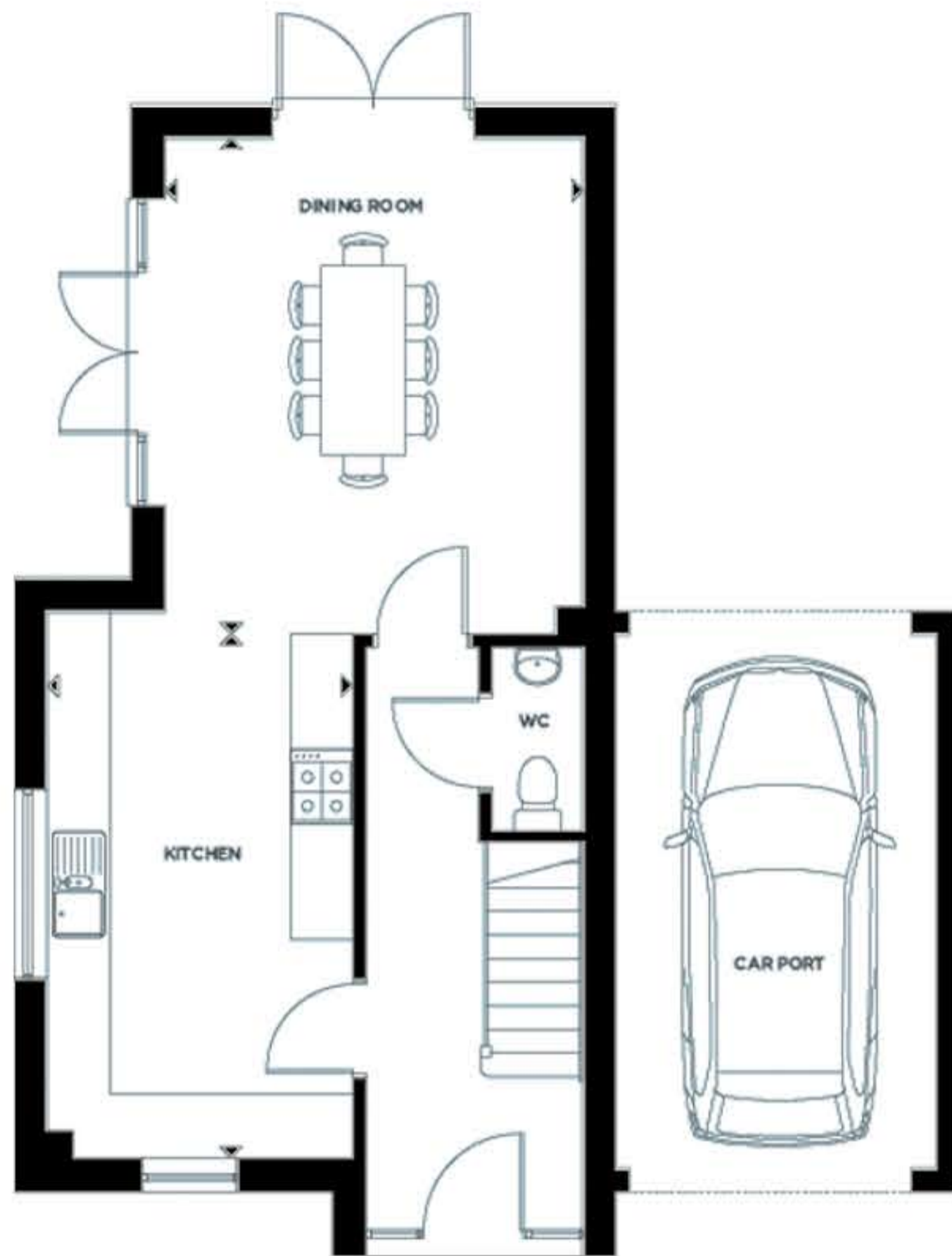


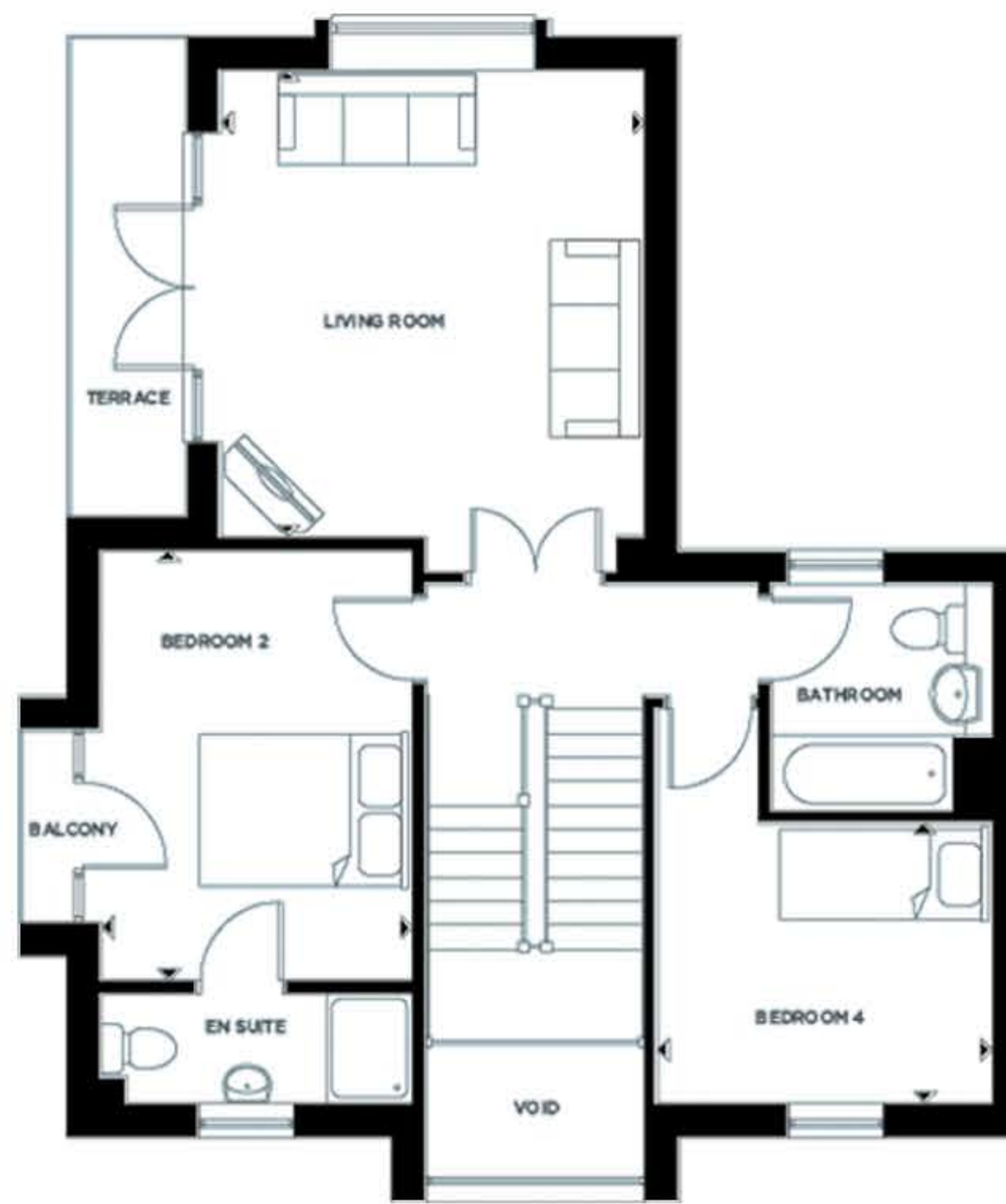
Conningbrook Lakes

Celandine

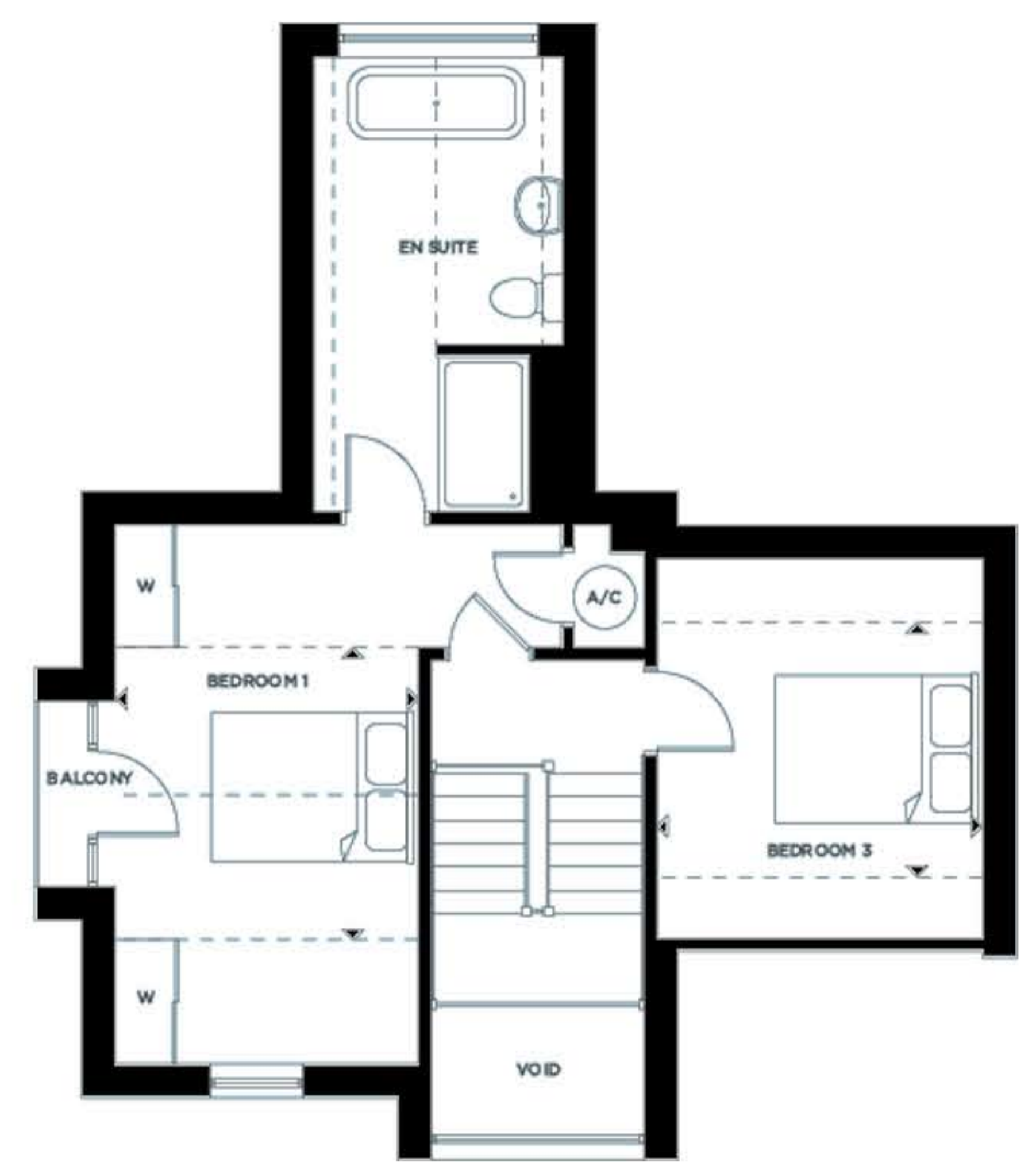
Ground Floor



First Floor



Second Floor



	Metric (mm)	Imperial (ft/in)
Family / Dining Room	4.72m x 3.96m	15'5" x 12'11"
Kitchen	5.20m x 2.92m	17'0" x 9'6"
Living Room	4.72m x 3.96m	15'5" x 12'11"
Bedroom 1	5.20m x 2.92m	17'0" x 9'6"
Bedroom 2	4.05m x 2.92m	13'3" x 9'6"
Bedroom 3	3.64m x 3.14m	11'11" x 10'3"
Bedroom 4	2.61m x 3.14m	8'6" x 10'3"